

SalonSERVE®

User Manual



- Offer desincrustation and iontophoresis facial treatments. For a direct and indirect method.
- Has a digital timer, digital power control and digital reverse polarity.
- Slimline design can be moved around with ease, great for small rooms.
- Comes complete with:
Galvanic client electrode; Galvanic roller electrode; High Frequency mushroom electrode; High frequency ball electrode; High frequency leaf electrode, High frequency saturator.
- Size: 24cm x 20cm.
- 6 months warranty.

Galvanic & High Frequency

SEQ640A

The Galvanic & High Frequency machine



Contents

Introduction	3
Benefits of the High Frequency, Galvanic machine	3-4
Contra Indications	4
The High Frequency electrodes and their uses	4
The Galvanic electrodes and their uses	5
The Galvanic gels	5
Galvanic treatment operating instructions.....	6
High Frequency treatment operating instructions	7-8
Galvanic facial treatment procedure	9
High Frequency deep cleansing facial treatment procedure.....	9
High Frequency anti-ageing facial treatment procedure	10
Precautions	11
Technical specifications and machine care	11

Introduction

The Salonserve combined high frequency/galvanic machine enables you to offer a variety of treatments to the skin. These include deep cleansing, soothing, decongesting, hydrating and warming treatments for both the face and body. The unit can be used to perform high frequency and galvanic treatments separately or together as one facial.



High Frequency

High Frequency has an alternating, oscillating current which works at 100 000 - 280 000Hz, which is completely safe and works at the same wavelength as a long wave radio. The machine works at a high frequency but with a low current flow, which makes it a comfortable gentle treatment for clients, as there is no muscle stimulation involved.

The two main treatments that can be offered with the machine are direct high frequency and indirect high frequency. Direct high frequency is ideally suited to clients with oily, seborrhoeic skins. It dries, stimulates and leaves a germicidal layer on the surface of the skin promoting healing and regeneration. It can also be used on combination, dry and mature skins. The indirect high frequency method or Viennese massage, as it is also known, is excellent for dry, dehydrated, sensitive and mature skins. This is a very calming, soothing, relaxing treatment which can be performed on all skin types.

Galvanic

The Salonserve galvanic facial machine is a low frequency electrical treatment unit which uses direct current to produce deep down chemical effects into the dermis and onto the surface of the skin.

The Salonserve galvanic facial machine enables you to offer a variety of deep cleansing and rehydrating treatments to your clients. Using a combination of galvanic and desincrustation low voltage current the galvanic facial machine provides gentle stimulus for all skin types. Treatments can be tailor made and adapted to suit your client's needs. In galvanic mode the facial unit provides a deep cleansing treatment for oily and combination skins.

It also works on deep cleansing seborrhoeic and acne skins and stimulates grey, sluggish skin.

When used as an iontophoresis treatment the facial unit calms and soothes the skin. The positive polarity also restores the skin's acid mantle and tightens and firms the skin leaving it looking calm and radiant at the end of the treatment.

The Salonserve facial galvanic machine can be used as a stand-alone treatment or combined with other electrical treatments such as steaming, high frequency and brush cleansing. By combining treatments in this way each client can be given a tailor made course of treatments to treat their particular skin complaint.

Benefits of the High Frequency Machine

Direct method

- Dries oily, acne and seborrhoeic skins
- To boost healing of damaged tissues
- Destroys bacteria on the surface of the skin
- Stimulates sebaceous secretions on a very dry skin when treatment time is limited
- Soothes nerves
- Increases blood flow, creating erythema and boosts metabolic rate.

Indirect method

- Improves poor circulation
- Boosts mature skins
- Cell metabolism is boosted by increased blood and lymph flow
- Gentle desquamation occurs through massage
- Tissues become deeply relaxed through heat and movements.

Benefits of the Galvanic Facial Machine

Desincrustation method

- Deep cleanses.
- Stimulates sluggish skin
 - Saponifies sebum
 - Breaks down keratin
 - Increases vasodilatation thus stimulating lymph removal, cell metabolism and oxygenation.

Iontophoresis method

- Hydrates and moisturises skin
 - Propels products into the skin
 - Restores skins acid mantle
 - Tightens and firms the skin
 - Soothes nerve endings
 - Revitalises tissues
 - Refines enlarged pores and improves texture of the skin.

Contra Indications

- Skin diseases or disorders
- Recent scar tissue
- Pregnancy
- Excessive metal fillings
- Sinus blockages
- Tense nervous clients
- Hairy areas
- Hypersensitive skin
- Highly vascular skin
- Epilepsy
- Diabetes
- Pacemaker
- Lack of skin sensitivity

The High Frequency electrodes and their uses

- **Saturator (TEST TUBE LOOKING WITH A METAL SPIRAL INNER)** - This completes the electrical circuit when performing indirect (Viennese) massage.
- **Mushroom head** - This is an all-purpose head, which works well on the face and body.
- **Leaf head** - This is good for working into small crevices such as the sides of the nose and chin and the tip can be used for sparking blemishes.
- **Ball end head** - This can also be used on small crevices such as the nose and chin.



The Galvanic electrodes and their uses

The roller electrode is used for the main part of the treatment and is used to glide smoothly across the cheeks, forehead, sides, jaw line, neck and décolleté areas. The roller is used for both desincrustation and iontophoresis alike.

Wrap damp cotton wool around the inactive electrode before giving to the client to hold to aid conduction.



Galvanic Gels

Salonserve offer a desincrustation gel to be used for all skin types and a collagen iontophoresis gel to choose from depending on skin type. The gels are an ideal blend for each skin type using natural plant extracts. The gels do not need to be mixed together; only one gel is needed to perform the treatment.

- **Desincrustation galvanic gel - 500ml - code: GGD**

A deep cleansing treatment gel designed to clear blocked pores and boost circulation.

- **Collagen galvanic gel - 500ml - code: GGC**

Blended with collagen and elastin, this gel has high moisturising properties and is ideal for dry, mature skin types. For use in iontophoresis.

Galvanic treatment operating instructions

1. Plug in mains lead and check the intensity control is at min.
2. Plug in roller into socket and plug in inactive electrode into wire with small metal end. Wipe over electrodes with surgical spirit.
3. Check that intensity control is at min and switch on.
4. Apply desincrustation gel to the skin and place a wad of damp cotton wool around the inactive electrode before giving it to the client to hold.
5. Apply petroleum jelly around the eyes and corners of the mouth to prevent flashing.
6. Ensure the client has removed all jewellery before starting treatment.
7. Check the machine is set to negative. When the button is depressed it is on positive and when fully out it is on negative.
8. Holding the roller in one hand place it on the client's skin and begin moving roller back and forth. At the same time slowly increase the intensity. When the client begins to feel a tingling sensation turn the intensity down slightly and begin treatment. Work slowly over the face with the roller. Desincrustation time should not exceed 10 minutes, work for just 2-3 minutes on a sensitive or dry skin. Turn the intensity down and switch off before removing electrode for the next part of the treatment.
9. Remove the desincrustation gel thoroughly with damp cotton wool.
10. Tone skin.
11. Apply appropriate iontophoresis gel to the skin.
12. Apply petroleum jelly around the eyes and corners of the mouth to prevent flashing.
13. Change the machine to positive polarity.
14. Holding the rollers in one hand place it on the client's skin and begin moving roller back and forth. At the same time slowly increase the

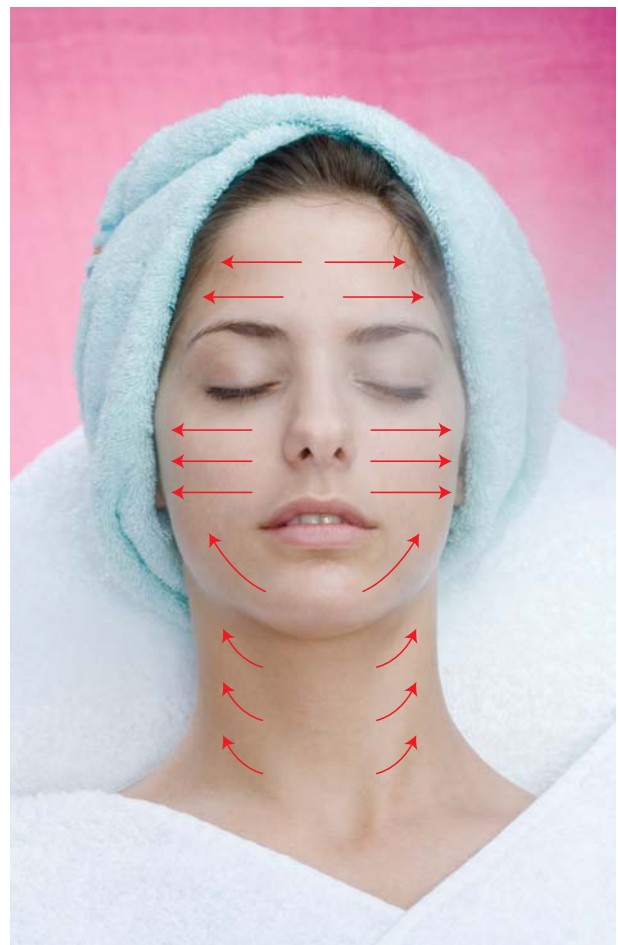
intensity. When the client begins to feel a tingling sensation turn the intensity down slightly and begin treatment. Work slowly over the face with the roller.

Iontophoresis time should not exceed 12 minutes, work for just 2-3 minutes on an oily or acne skin just to replace the acid mantle.

ALWAYS REMOVE THE ROLLER BEFORE THE MACHINE POWERS OFF; DO NOT POWER OFF ON THE CLIENT.

15. Remove the iontophoresis gel thoroughly with damp cotton wool before commencing rest of treatment. If performing a combined galvanic, high frequency treatment move onto high frequency instructions.

Galvanic Roller Movements

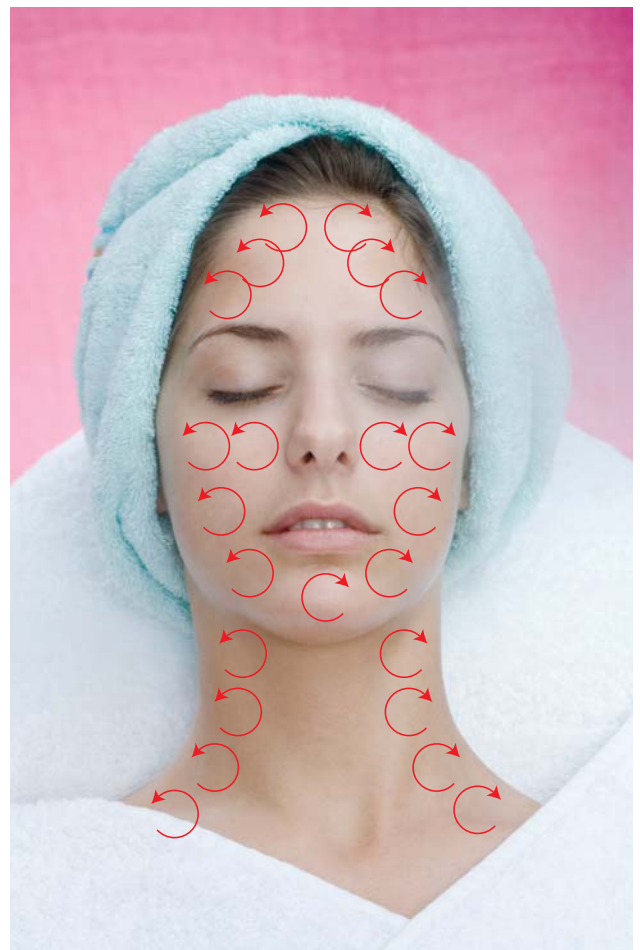


ALWAYS REMOVE THE ROLLER BEFORE THE MACHINE POWERS OFF; DO NOT POWER OFF ON THE CLIENT.

High Frequency treatment operating instructions

Direct method

1. Plug in mains lead and check the intensity control is at min.
2. Select an electrode and wipe over with surgical spirit.
3. Insert electrode into the end of the handset and place gently onto client's face.
4. Apply oxygenating cream or talcum powder to the skin.
5. Cover client's eyes with damp cotton wool pads.
6. Switch the machine on whilst slowly rotating the electrode on the skin. Now begin to increase the intensity using the ENERGY + up to the client's tolerance level.
7. Work over the skin in gentle circular rotations. The lighter the electrode is held on the skin the stronger it is felt. Do not break contact with the skin at any time when the machine is on as this will cause an uncomfortable sparking effect for the client.
8. Switch the intensity level back to 1 using ENERGY - and press START to switch OFF before removing the electrode from the skin at the end of the treatment.
9. Remove medium from skin and wipe off any excess from electrode before commencing rest of treatment.

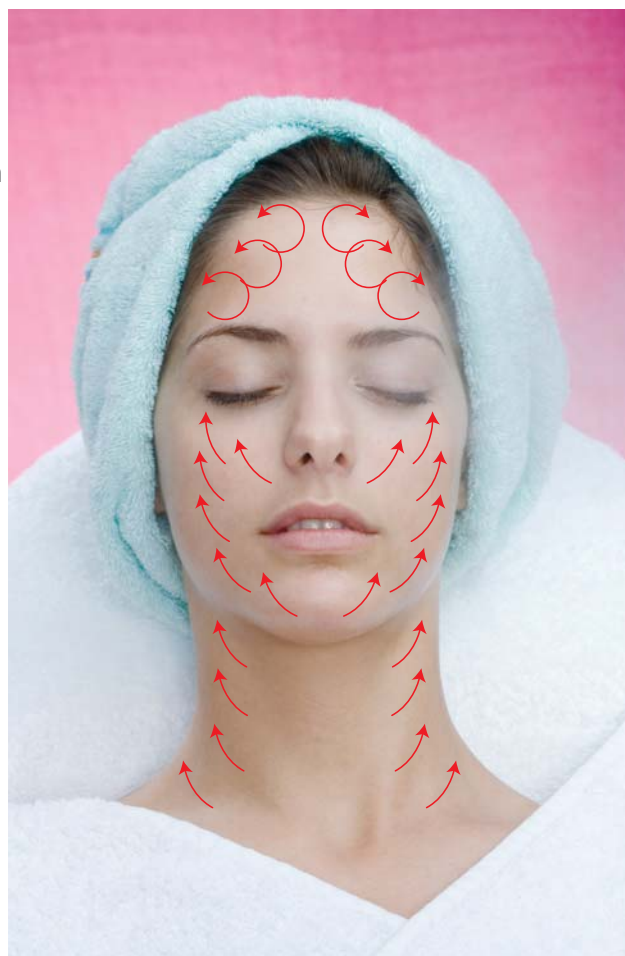


Direct High Frequency
movements

High Frequency treatment operating instructions (cont)

Indirect method

1. Plug in mains lead and check the intensity control is at min.
2. Wipe over the saturator with surgical spirit and insert it into the white handset. Ask the client to hold the saturator firmly. Place one hand on the white handset and the other on the saturator and dust the client's hand with talcum powder to absorb any perspiration.
3. Apply high frequency oxygenating cream.
4. Now make contact with the client using small circular movements with one hand on the top of their head.
5. Turn the machine on with the START switch and slowly turn the intensity up using ENERGY + to within the client's tolerance level.
6. Now place the other hand on the client's face and begin facial massage. Warmth should be felt passing through the hands via the machine.
7. Remember not to lose contact with the client at any time whilst the machine is on as this will result in shocking the client.
8. Remove one hand from the client to turn the intensity to min using ENERGY - and press SELECT to switch OFF. Then remove hands from the client. Remove cream from skin and wipe over saturator with surgical spirit before commencing rest of treatment.



Indirect High Frequency
movements

Galvanic Facial Treatment Procedure

Time: 45 mins - 1 hour

RRP: £45 - £65

This is an excellent deep cleansing facial, which is especially suitable for oily, acne or combination skin types. The galvanic treatment can be used on its own or as part of an electrical facial session as shown below. When performing desincrustation treatment time varies according to skin type. Oily skins: 10-12minutes. Dry/dehydrated: 3-5 minutes. When the polarity is switched over to positive work for 2-3 mins on oily skins and up to 12 minutes on a dry or mature skin.

1. Perform double cleanse then do skin assessment on client and discuss appropriate treatment plan with client.
2. Steam skin and/or brush cleanses to remove any surface congestion.
3. Apply desincrustation gel to the skin and place a wad of damp cotton wool around the inactive electrode before giving it to the client to hold.
4. Apply petroleum jelly around the eyes and corners of the mouth to prevent flashing.
5. Ensure the client has removed all jewellery before starting treatment.
6. Check the machine is set to negative using the MODE button. Set to '-'
7. Using the roller work over the skin for the appropriate amount of time.
8. Remove the desincrustation gel thoroughly with damp cotton wool.
9. Tone skin.
10. Apply appropriate iontophoresis gel to the skin.
11. Apply petroleum jelly around the eyes and corners of the mouth to prevent flashing.
12. Change the machine to positive polarity using the MODE button. Set to '+'
13. Using the roller work over the skin for the appropriate amount of time. **ALWAYS REMOVE THE ROLLER BEFORE THE MACHINE POWERS OFF; DO NOT POWER OFF ON THE CLIENT.**

14. Remove the iontophoresis gel thoroughly with damp cotton wool.
15. A high frequency treatment works well at this stage of the facial otherwise move on to facial massage.
16. Now apply an appropriate mask and leave for 10-15 minutes.
17. Remove mask with warm water and sponges, tone skin and apply eye and face creams to finish.

High Frequency Deep Cleansing Facial Treatment Procedure

Time: 45 mins - 1 hour

RRP: £45 - £65

This is an excellent deep cleansing facial, which is suitable for most skin types. The high frequency treatment can be used on its own or as part of an electrical facial session as shown below. When performing the direct method of high frequency treatment time varies according to skin type.

Oily skins: 10 - 15 minutes

Dry/dehydrated: 3 - 5 minutes

1. Perform double cleanse then do skin assessment on client and discuss appropriate treatment plan with client.
2. Exfoliate skin.
3. Cover client's eyes with damp cotton wool pads.
4. Steam skin between 5-15 minutes depending on skin type and sensitivity. Tone over area.
5. Select an electrode and wipe over with surgical spirit.
6. Insert electrode into the end of the grey handset and place gently onto the clients face.
7. Cover client's eyes with damp cotton wool pads.
8. Apply oxygenating cream to the skin or talcum powder. Apply gauze over the face taking care to make eye, nose and mouth holes.
9. Switch the machine on using the SELECT button whilst slowly rotating the electrode on the skin. Now begin to increase the intensity up to the client's tolerance level, using ENERGY +.

10. Work over the skin in gentle circular rotations. The lighter the electrode is held on the skin the stronger it is felt. Do not break contact with the skin at any time when the machine is on, as this will cause an uncomfortable sparking effect for the client.
11. Turn the intensity to min using ENERGY - and turn OFF using SELECT button before removing the electrode from the skin at the end of the treatment.
12. Remove medium from skin and wipe off any excess from electrode. The skin can be now treated with indirect high frequency to calm and soothe the nerve endings.
13. Wipe over the saturator with surgical spirit and insert it into the handset. Ask the client to hold the saturator firmly. Place one hand on the handset and the other on the saturator and dust the client's hand with talcum powder to absorb any perspiration.
14. Apply massage medium.
15. Now make contact with the client using small circular movements with one hand on the top of their head.
16. Turn the machine on with SELECT switch and slowly turn the intensity using ENERGY + up to within the client's tolerance level.
17. Now place the other hand on the clients face and begin facial massage. Warmth should be felt passing through the hands via the machine.
18. Remember not to lose contact with the client at any time whilst the machine is on as this will result in shocking the client.
19. Remove one hand from the client to turn the intensity to min using ENERGY - and switch OFF. Then remove hands from the client. Remove medium from skin and wipe over saturator with surgical spirit.
20. Now apply deep cleansing mask and leave for 10-15 minutes.
21. Remove mask with warm water and sponges, tone skin and apply eye and face creams to finish.

High Frequency Anti-ageing Facial Treatment Procedure

Time: 45mins - 1 hour
RRP: £45 - £65

This is a relaxing facial that rejuvenates, softens, calms and heals all skin types but is specially suited to dry and sensitive skins.

1. Perform double cleanse then do skin assessment on client and discuss appropriate treatment plan with client.
2. Exfoliate skin.
3. Steaming is optional depending on sensitivity of skin.
4. Wipe over the saturator with surgical spirit and insert it into the handset. Ask the client to hold the saturator firmly. Place one hand on the handset and the other on the saturator and dust the client's hand with talcum powder to absorb any perspiration.
5. Apply massage medium.
6. Now make contact with the client using small circular movements with one hand on the top of their head.
7. Turn the machine on using SELECT and slowly turn the intensity up to within the client's tolerance level using ENERGY +
8. Now place the other hand on the clients face and begin facial massage. Warmth should be felt passing through the hands via the machine.
9. Remember not to lose contact with the client at any time whilst the machine is on as this will result in shocking the client.
10. Remove one hand from the client to turn the intensity to min using ENERGY - and switch OFF using SELECT. Then remove hands from the client. Remove medium from skin and wipe over saturator with surgical spirit.
11. Now apply a nourishing mask and leave for 10-15 minutes. A paraffin wax mask works especially well with this treatment.
12. Remove mask with warm water and sponges, tone skin and apply eye and face creams to finish.

Body Treatments

Indirect high frequency works well when incorporated into any massage treatment to bring heat and warmth to the area. Direct high frequency on the body is most effective when used to reduce oiliness and works well as an acne back treatment. When executing body treatments follow the instructions for facial procedures but adapt to whichever body part you are working on.

Precautions

- Remove all jewellery from both you and the client.
- Make sure the client is not in contact with any metal such as the arm of the couch.
- Warn the client of the noise from the machine and the orange glowing light.
- Always keep the electrode in contact with the skin during the treatment.
- Keep in verbal contact with the client throughout the treatment.
- Do not linger on the same spot, as a build up heat will occur on the skin.
- Do not break contact with the skin when performing Viennese massage.
- Do not enter eye area during direct high frequency treatment.
- Do not let the skin dry out at any time, reapply gel whenever needed.
- Test the current on yourself before beginning treatment.

ALWAYS REMOVE THE GALVANIC ROLLERS BEFORE THE MACHINE POWERS OFF; DO NOT POWER OFF ON THE CLIENT.

Technical & Machine Care

Technical Specifications

Power supply: 220 - 240 volt
Hertz: 50 - 60Hz

G.W.: 2.2kg
Size: 24 x 20cm

Machine Care

- Do not immerse any parts of the machine or galvanic electrodes in water.
- Clean the handset with surgical spirit on cotton wool between each client.
- Clean the unit with a damp soft cloth.
- Wash the high frequency electrodes and saturator in warm soapy water then wipe over with surgical spirit.

Notes

Salonserve Hair & Beauty Supplies Ltd, Lexicon
House, Irthlingborough, Northants, NN9 5QF

Telephone: 01933 410022

www.salonserve.com