

# SalonSERVE®

## User Manual

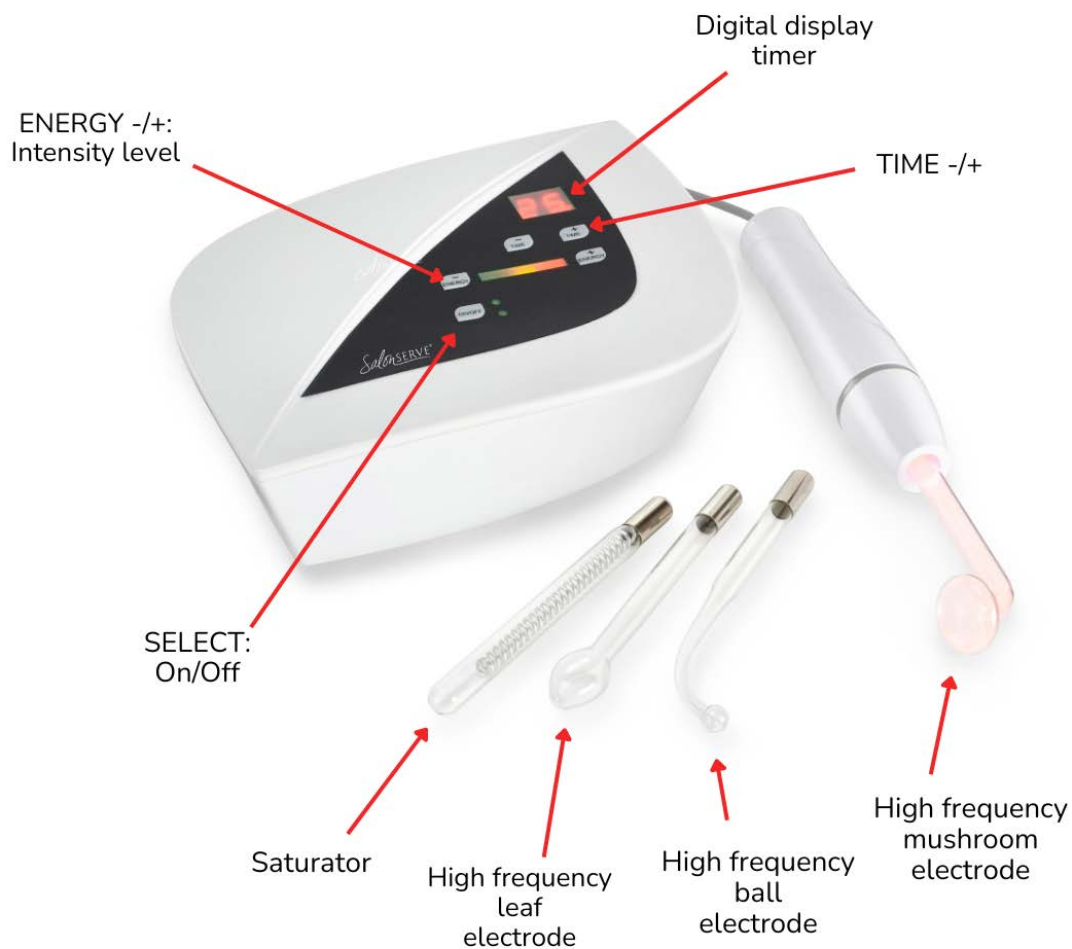


- Advanced Functionality: Equipped with a digital timer and digital power control for precise treatment settings.
- Compact and Portable: Lightweight design makes it easy to move and store.
- Complete Neon (Orange) Gas Electrode Set: Comes with 1 x saturator, 1 x mushroom electrode, 1 x leaf electrode, and 1 x ball electrode.
- Complete Argon (Violet) Gas Electrode Set: Comes with 1 x saturator, 1 x mushroom electrode, 1 x leaf electrode, and 1 x ball electrode.
- Dimensions: 24 x 20cm
- Power: 25W
- Warranty: 1 year

## High Frequency (Neon & Argon Gas)

SEQ643

# The High Frequency machine



## Contents

Introduction .....	3
Benefits of the High Frequency machine .....	3
Contra Indications .....	3
The High Frequency electrodes and their uses .....	4
Operating instructions .....	5-6
High Frequency deep cleansing facial .....	7
High Frequency anti-ageing facial .....	7-8
Precautions .....	8
Technical specifications and machine care .....	8

# Introduction

The Salonserve high frequency enables you to offer a variety of treatments to the skin. These include deep cleansing, soothing, decongesting, hydrating and warming treatments for both the face and body.

This machine includes both neon and argon gas electrodes, enhancing the versatility of your treatments.



## High Frequency

High Frequency has an alternating, oscillating current which works at 100 000 - 280 000Hz, which is completely safe and works at the same wavelength as a long wave radio. The machine works at a high frequency but with a low current flow, which makes it a comfortable gentle treatment for clients, as there is no muscle stimulation involved.

The two main treatments that can be offered with the machine are direct high frequency and indirect high frequency. Direct high frequency is ideally suited to clients with oily, seborrhoeic skins. It dries, stimulates and leaves a germicidal layer on the surface of the skin promoting healing and regeneration. It can also be used on combination, dry and mature skins. The indirect high frequency method or Viennese massage, as it is also known, is excellent for dry, dehydrated, sensitive and mature skins. This is a very calming, soothing, relaxing treatment which can be performed on all skin types.

## Benefits of the High Frequency Machine

### Direct method

- Dries oily, acne and seborrhoeic skins
- To boost healing of damaged tissues
- Destroys bacteria on the surface of the skin
- Stimulates sebaceous secretions on a very dry skin when treatment time is limited
- Soothes nerves
- Increases blood flow, creating erythema and boosts metabolic rate.

### Indirect method

- Improves poor circulation
- Boosts mature skins
- Cell metabolism is boosted by increased blood and lymph flow
- Gentle desquamation occurs through massage
- Tissues become deeply relaxed through heat and movements.

## Contra Indications

- Skin diseases or disorders
- Recent scar tissue
- Pregnancy
- Excessive metal fillings
- Sinus blockages
- Tense nervous clients
- Hairy areas
- Hypersensitive skin
- Highly vascular skin
- Epilepsy
- Diabetes
- Pacemaker
- Lack of skin sensitivity

## The High Frequency electrodes and their uses

### **New Electrode Technology: This machine includes both Neon (Orange) and Argon (Violet) gas electrodes, enhancing the versatility of your treatments.**

- **Saturator (TEST TUBE LOOKING WITH A METAL SPIRAL INNER)** - This completes the electrical circuit when performing indirect (Viennese) massage.
- **Mushroom head** - This is an all-purpose head, which works well on the face and body.
- **Leaf head** - This is good for working into small crevices such as the sides of the nose and chin and the tip can be used for sparking blemishes.
- **Ball end head** - This can also be used on small crevices such as the nose and chin.



#### **Benefits of Neon (Orange) Gas Electrodes:**

- Rejuvenation and Anti-Ageing: Neon gas is known for its skin-rejuvenating properties, promoting blood circulation and stimulating collagen production for a youthful glow.
- Improved Skin Tone: Helps to revitalise tired and dull skin, improving overall texture and radiance.

#### **Benefits of Argon (Violet) Gas Electrodes:**

- Antibacterial Properties: Argon gas electrodes are highly effective for targeting blemishes and reducing inflammation, making them ideal for acne-prone skin.
- Healing and Calming: Helps soothe irritated skin and accelerates the healing process.



#### **Argon (Violet) Gas**

Ideal for treating acne-prone skin, targeting blemishes and reducing inflammation. Helps soothe irritated skin and accelerates the healing process.

#### **Neon (Orange) Gas**

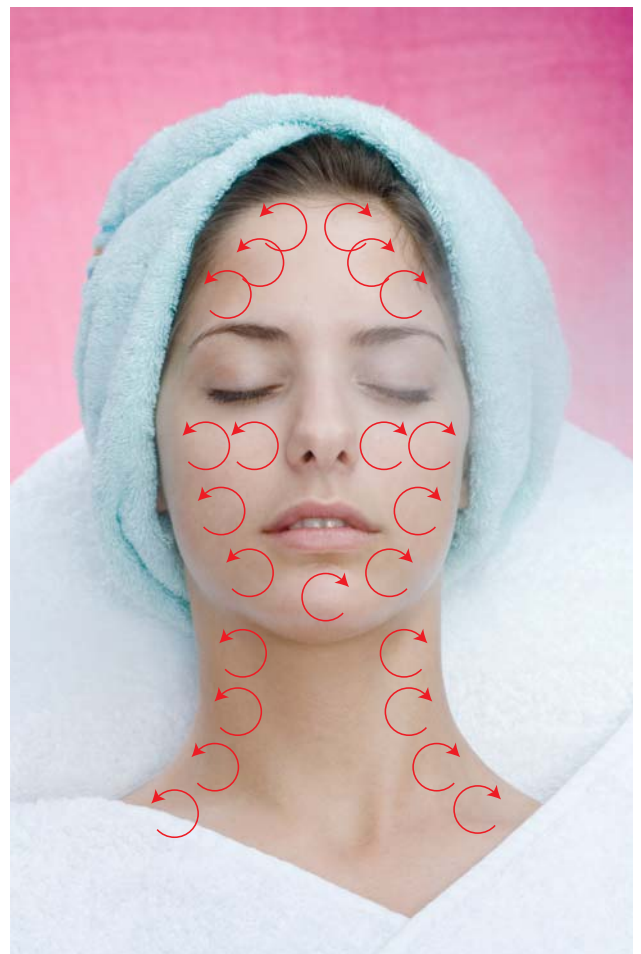
Known for its skin-rejuvenating properties, promoting blood circulation and stimulating collagen production. Helps to revitalise tired and dull skin, improving overall texture and radiance.



# High Frequency treatment operating instructions

## Direct method

1. Plug in mains lead and check the intensity control (ENERGY) is at minimum.
2. Select an electrode and wipe over with surgical spirit.
3. Insert electrode into the end of the handset and place gently onto client's face.
4. Apply oxygenating cream or talcum powder to the skin.
5. Cover client's eyes with damp cotton wool pads.
6. Switch the machine on using the SELECT ON/OFF button whilst slowly rotating the electrode on the skin. Now begin to increase the intensity using ENERGY + up to the client's tolerance level.
7. Work over the skin in gentle circular rotations. The lighter the electrode is held on the skin the stronger it is felt. Do not break contact with the skin at any time when the machine is on as this will cause an uncomfortable sparking effect for the client.
8. Switch the intensity level back to 1 using ENERGY - and switch to OFF before removing the electrode from the skin at the end of the treatment.
9. Remove medium from skin and wipe off any excess from electrode before commencing rest of treatment.



Direct High Frequency  
movements

# High Frequency treatment operating instructions (cont)

## Indirect method

1. Plug in mains lead and check the intensity control (ENERGY) is at minimum.
2. Wipe over the saturator with surgical spirit and carefully insert it into the handset. Ask the client to hold the saturator firmly, placing one hand on the white handset and the other on the saturator and dust the client's hand with talcum powder to absorb any perspiration. Optional: cover the clients hands and secure with a towel.
3. Apply high frequency oxygenating cream.
4. Now make contact with the client using small circular movements with one hand on the top of their head - do not break contact now until the machine is switched off.
5. Using your free hand, turn the machine on using the SELECT ON/OFF switch and slowly turn the intensity up using ENERGY + to within the client's tolerance level.
6. Now place your free hand onto the client's face and begin facial massage. Warmth should be felt passing through the hands via the machine. The lighter the pressure, the more stimulating the massage is.
7. To create a more concentrated current, you can lift one hand or use fingertips to stimulate certain areas.
8. Remember not to lose contact with the client at any time whilst the machine is on as this will result in shocking the client.
9. Remove one hand from the client to turn the intensity to minimum using ENERGY - and switch to OFF. Then remove hands from the client. Remove medium from skin and wipe over saturator with surgical spirit before commencing the rest of treatment.



Indirect High Frequency  
movements



## High Frequency Deep Cleansing Facial Treatment Procedure

**Time: 1 hour**

**RRP: £45 - £65**

This is an excellent deep cleansing facial, which is suitable for most skin types. The high frequency treatment can be used on it's own or as part of an electrical facial session as shown below. When performing the direct method of high frequency treatment time varies according to skin type.

Oily skins: 10 - 15 minutes

Dry/dehydrated: 3 - 5 minutes

1. Perform double cleanse then do skin assessment on client and discuss appropriate treatment plan with client.
2. Exfoliate skin.
3. Cover client's eyes with damp cotton wool pads.
4. Steam skin between 5-15 minutes depending on skin type and sensitivity. Tone over area.
5. Select an electrode and wipe over with surgical spirit.
6. Insert electrode into the end of the handset and place gently onto the clients face.
7. Cover client's eyes with damp cotton wool pads.
8. Apply oxygenating cream to the skin or talcum powder. Apply gauze over the face taking care to make eye, nose and mouth holes.
9. Switch the machine on using the SELECT ON/OFF switch whilst slowly rotating the electrode on the skin. Now begin to increase the intensity up to the client's tolerance level.
10. Work over the skin in gentle circular rotations. The lighter the electrode is held on the skin the stronger it is felt. Do not break contact with the skin at any time when the machine is on, as this will cause an uncomfortable sparking effect for the client.
11. Turn the intensity to min and switch to OFF before removing the electrode from the skin at the end of the treatment.
12. Remove medium from skin and wipe off any excess from electrode. The skin can be now treated with indirect high frequency to calm and soothe the nerve endings.

13. Wipe over the saturator with surgical spirit and carefully insert it into the handset. Ask the client to hold the saturator firmly, placing one hand on the white handset and the other on the saturator and dust the client's hand with talcum powder to absorb any perspiration. Optional: cover the clients hands and secure with a towel.
14. Apply high frequency oxygenating cream.
15. Now make contact with the client using small circular movements with one hand on the top of their head - do not break contact now until the machine is switched off.
16. Using your free hand, turn the machine on using the SELECT ON/OFF switch and slowly turn the intensity up using ENERGY + to within the client's tolerance level.
17. Now place your free hand onto the client's face and begin facial massage. Warmth should be felt passing through the hands via the machine.
18. Remember not to lose contact with the client at any time whilst the machine is on as this will result in shocking the client.
19. Remove one hand from the client to turn the intensity to minimum using ENERGY - and switch to OFF. Then remove hands from the client. Remove medium from skin and wipe over saturator with surgical spirit.
20. Now apply deep cleansing mask and leave for 10-15 minutes.
21. Remove mask with warm water and sponges, tone skin and apply eye and face creams to finish.

## High Frequency Anti-ageing Facial Treatment Procedure

**Time: 1 hour**

**RRP: £45- £65**

This is a relaxing facial that rejuvenates, softens, calms and heals all skin types but is specially suited to dry and sensitive skins.

1. Perform double cleanse then do skin assessment on client and discuss appropriate treatment plan with client.
2. Exfoliate skin.
3. Steaming is optional depending on sensitivity of skin.

4. Wipe over the saturator with surgical spirit and carefully insert it into the handset. Ask the client to hold the saturator firmly, placing one hand on the white handset and the other on the saturator and dust the client's hand with talcum powder to absorb any perspiration. Optional: cover the clients hands and secure with a towel.
5. Apply high frequency oxygenating cream.
6. Now make contact with the client using small circular movements with one hand on the top of their head - do not break contact now until the machine is switched off.
7. Using your free hand, turn the machine on using the SELECT ON/OFF switch and slowly turn the intensity up using ENERGY + to within the client's tolerance level.
8. Now place your free hand onto the client's face and begin facial massage. Warmth should be felt passing through the hands via the machine.
9. Remember not to lose contact with the client at any time whilst the machine is on as this will result in shocking the client.
10. Remove one hand from the client to turn the intensity to minimum using ENERGY - and switch to OFF. Then remove hands from the client. Remove medium from skin and wipe over saturator with surgical spirit.
11. Now apply a nourishing mask and leave for 10-15 minutes. A paraffin wax mask works especially well with this treatment.
12. Remove mask with warm water and sponges, tone skin and apply eye and face creams to finish.

## Body Treatments

Indirect high frequency works well when incorporated into any massage treatment to bring heat and warmth to the area. Direct high frequency on the body is most effective when used to reduce oiliness and works well as an acne back treatment. When executing body treatments follow the instructions for facial procedures but adapt to whichever body part you are working on.

### Precautions

- Remove all jewellery from both you and the client.
- Make sure the client is not in contact with any metal such as the arm of the couch.

- Warn the client of the noise from the machine and the orange glowing light.
- Always keep the electrode in contact with the skin during the treatment.
- Keep in verbal contact with the client throughout the treatment.
- Do not linger on the same spot, as a build up heat will occur on the skin.
- Do not break contact with the skin when performing Viennese massage.
- Do not enter eye area during direct high frequency treatment.
- Do not let the skin dry out at any time, reapply gel whenever needed.
- Test the current on yourself before beginning treatment.

## Technical & Machine Care

### Technical Specifications

Power supply: 220 - 240 volt  
Hertz: 50 - 60Hz

G.W.: 2.2kg  
Size: 24cm x 20cm

### Machine Care

- Do not immerse any parts of the machine in water.
- Clean the handset with surgical spirit on cotton wool between each client.
- Clean the unit with a damp soft cloth.
- Wash the high frequency electrodes and saturator in warm soapy water then wipe over with surgical spirit.



# Notes

A series of horizontal dotted lines for taking notes.

Salonserve Hair & Beauty Supplies Ltd,  
Lexicon House, Irthlingborough, Northants, NN9 5QF  
Tel: 01933 410022

[www.salonserve.com](http://www.salonserve.com)