

RENBOW[®]

Colorissimo[®]

PERMANENT HAIR COLOUR CRÈME

Chroma Technology with Pure Beeswax



INTRODUCTION

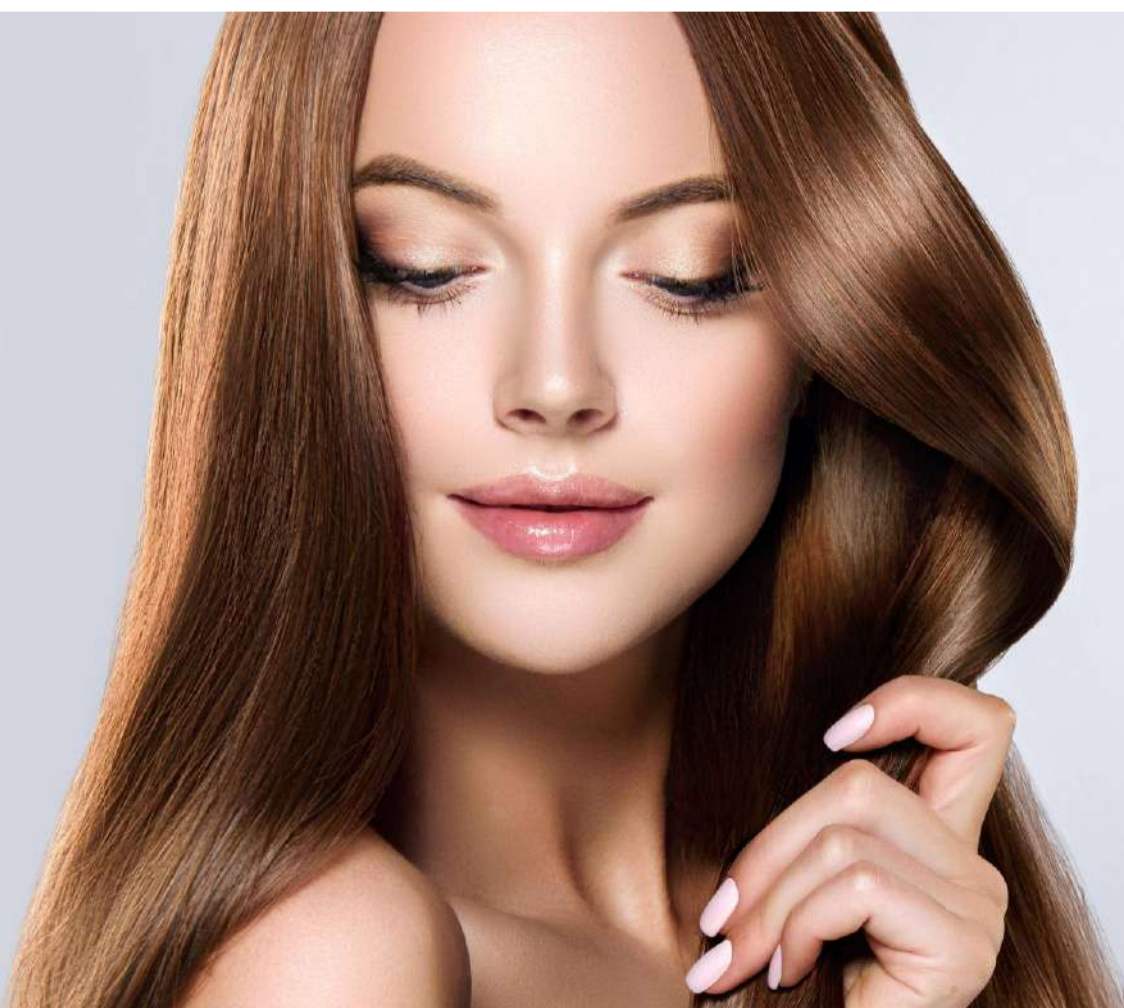
Launched in the seventies, COLORISSIMO® has been trusted by professional hair colourists for over 50 years.

Formulated for maximum condition and shine by scientific colour experts, COLORISSIMO®'s formulations are pivotal in changing the direction of permanent hair colour for future generations of creative stylists.

Breakthrough Chroma Technology penetrates deep into the hair fibre for rich, long lasting, beautiful colour.

The unique crème formulation base provides different depths and intensities of natural shading with up to 100% complete coverage of white hair.

With 94 intermixable shades and unlimited colour opportunities, COLORISSIMO® allows you to offer your clients the optimum in colour vibrance.



SPECIAL BLACK NATURAL

1A / 1.1
BLUE BLACK



1N / 1.0
BLACK



3N / 3.0
DARK BROWN



4N / 4.0
BROWN



5N / 5.0
LIGHT BROWN



6N / 6.0
DARK BLONDE



7N / 7.0
BLONDE



8N / 8.0
LIGHT BLONDE



9N / 9.0
VERY LIGHT BLONDE



10N / 10.0
LIGHTEST BLONDE



COOL NATURAL

5NN / 5.00
COOL NATURAL
LIGHT BROWN



6NN / 6.00
COOL NATURAL
DARK BLONDE



7NN / 7.00
COOL NATURAL
MEDIUM BLONDE



8NN / 8.00
COOL NATURAL
LIGHT BLONDE



9NN / 9.00
COOL NATURAL
VERY LIGHT BLONDE



NATURAL ASH

4A / 4.1
MEDIUM NATURAL
ASH BROWN



5A / 5.1
LIGHT NATURAL
ASH BROWN



6A / 6.1
DARK NATURAL
ASH BLONDE



7A / 7.1
MEDIUM NATURAL
ASH BLONDE



8A / 8.1
LIGHT NATURAL
ASH BLONDE



9A / 9.1
VERY LIGHT NATURAL
ASH BLONDE



10A / 10.1
LIGHTEST
ASH BLONDE



IMPORTANT: Colours shown in this digital shade chart may vary due to different screen settings, device types and printer capabilities.

NORDIC ASH

5P / 5.01
LIGHT NORDIC
ASH BROWN



6P / 6.01
DARK NORDIC
ASH BLONDE



7P / 7.01
MEDIUM NORDIC
ASH BLONDE



8P / 8.01
LIGHT NORDIC
ASH BLONDE



9P / 9.01
VERY LIGHT NORDIC
ASH BLONDE



GOLDEN

4D / 4.3
GOLDEN
BROWN



5D / 5.3
LIGHT GOLDEN
BROWN



6D / 6.3
DARK GOLDEN
BLONDE



7D / 7.3
GOLDEN
BLONDE



8D / 8.3
LIGHT GOLDEN
BLONDE



CHOCOLATES

9D / 9.3
VERY LIGHT
GOLDEN BLONDE



10D / 10.3
WHITE GOLD



4C / 4
DARK CHOCOLATE



5C / 5
MILK CHOCOLATE



6C / 6
CAPPUCCINO



WARM NATURAL

5NBG / 5NW
LIGHT NATURAL
WARM BROWN



6NBG / 6NW
DARK NATURAL
WARM BLONDE



7NBG / 7NW
MEDIUM NATURAL
WARM BLONDE



8NBG / 8NW
LIGHT NATURAL
WARM BLONDE



CHESTNUT

4DM / 4.35
MEDIUM CHESTNUT
BROWN



5DM / 5.35
LIGHT CHESTNUT
BROWN



6DM / 6.35
DARK CHESTNUT
BLONDE



7DM / 7.35
MEDIUM CHESTNUT
BLONDE



IMPORTANT: Colours shown in this digital shade chart may vary due to different screen settings, device types and printer capabilities.



colorissimo

PERMANENT HAIR COLOUR CRÈME
Chroma Technology with Pure Beeswax

COCOA

5H / 5.003

LIGHT MOCHA BROWN



6H / 6.003

DARK MOCHA BLONDE



7H / 7.003

MEDIUM MOCHA BLONDE



8H / 8.003

LIGHT MOCHA BLONDE



MAHOGAN Y

4M / 4.5

MEDIUM MAHOGAN Y BROWN



5M / 5.5

LIGHT MAHOGAN Y BROWN



6M / 6.5

DARK MAHOGAN Y BLONDE



VIOLET RED

4VR / 4.62

MEDIUM VIOLET RED BROWN



5VR / 5.62

LIGHT VIOLET RED BROWN



INTENSE RED

5RR / 5.66

LIGHT VIVID RED BROWN



6RR / 6.66

DARK VIVID RED BLONDE



7RR / 7.66

MEDIUM VIVID RED BLONDE



8RR / 8.66

LIGHT VIVID RED BLONDE



COPPER

5R0 / 5.4

LIGHT COPPER BROWN



6R0 / 6.4

DARK COPPER BLONDE



7R0 / 7.4

MEDIUM COPPER BLONDE



INTENSE COPPER

7CC / 7.44

MEDIUM INTENSE COPPER BLONDE



8CC / 8.44

LIGHT INTENSE COPPER BLONDE



GOLDEN COPPER

4RB / 4.43

MEDIUM COPPER GOLDEN BROWN



5RB / 5.43

LIGHT COPPER GOLDEN BROWN



6RB / 6.43

DARK COPPER GOLDEN BLONDE



IMPORTANT: Colours shown in this digital shade chart may vary due to different screen settings, device types and printer capabilities.



colorissimo

PERMANENT HAIR COLOUR CRÈME
Chroma Technology with Pure Beeswax OOOOOOOO

POWER BLONDE

HLN / 11.0
HIGH LIFT
NATURAL BLONDE



HLA / 11.1
HIGH LIFT
ASH BLONDE



HLB / 11.13
HIGH LIFT
BEIGE BLONDE



HLP / 11.2
HIGH LIFT
PLATINUM BLONDE



HLG / 11.3
HIGH LIFT
GOLDEN BLONDE



SUPERLIGHT BLONDE

12N / 12.0
SUPER
NATURAL BLONDE



12A / 12.1
SUPER ASH BLONDE



12V / 12.2
SUPER
PLATINUM BLONDE



12P / 12.9
SUPER ICE BLONDE



BLONDE BOOSTER

BB / 0.00
BLONDE BOOSTER



RADIANT REDS

HLR
SUPER INTENSE
RED



HLVR
SUPER INTENSE
VIOLET RED



HLC
SUPER INTENSE
COPPER



COLOUR INTENSIFIERS

BLUE
BLUE INTENSIFIER



VIOLET
VIOLET INTENSIFIER



RED
RED INTENSIFIER



SILVER
SILVER INTENSIFIER



PEARL
PEARL INTENSIFIER



IMPORTANT: Colours shown in this digital shade chart may vary due to different screen settings, device types and printer capabilities.

GREY METALLICS

GREY
SMOKEY GREY



SILVER
SILVER GREY



SLATE
SLATE BLUE

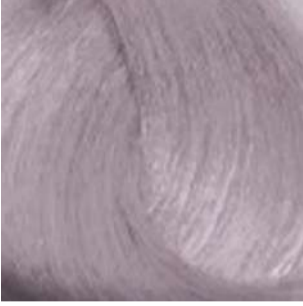


LAVENDER
GREY LAVENDER



ROSE METALLICS

10PRM
PLATINUM ROSE



9RGM
ROSE GOLD



8BRM
BRONZE ROSE



VIOLET METALLICS

9VM
PLATINUM VIOLET



8VM
MEDIUM VIOLET



7VM
DEEP VIOLET



IMPORTANT: Colours shown in this digital shade chart may vary due to different screen settings, device types and printer capabilities.

EN Application:

Wear suitable gloves.

Do not use metallic tools, clips, combs etc.

Apply on unwashed, dry hair.

Formulation:

Step One: Determine natural base or tinted level.

Step Two: Determine desired COLORISSIMO® colour.

Step Three: Use desired COLORISSIMO® colour with appropriate Cream Developer.

Selecting the Correct COLORISSIMO® Cream Developer:

Desired Result	Mixing Proportion	Formula	Processing Time
Tone on Tone Enhancer (Demi-permanent)	1 : 2	40ml COLORISSIMO® + 80ml Tone on Tone Enhancer	15 min.
Darken by one tone or colour bleached hair	1 : 1	40ml COLORISSIMO® + 40ml Cream Developer 10 Volume (3%)	30 min.
Lightening 1 Level, colour hair tone on tone	1 : 1	40ml COLORISSIMO® + 60ml Cream Developer 20 Volume (6%)	40 min.
Lightening 2 Levels	1 : 1	40ml COLORISSIMO® + 60ml Cream Developer 30 Volume (9%)	40 min.
Lightening 3 Levels	1 : 1	40ml COLORISSIMO® + 60ml Cream Developer 40 Volume (12%)	50 min.
Lightening 4 Levels	1 : 1	20ml COLORISSIMO® + 20ml Blonde Booster (0.00) + 40ml Cream Developer 40 Volume (12%)	50 min.
Power Blonde (4 levels)	1 : 2	40ml COLORISSIMO® + 80ml Cream Developer 40 Volume (12%)	50 min.
Superlight Blondes (5 levels)	1 : 2	40ml COLORISSIMO® + 80ml Cream Developer 40 Volume (12%)	50 min.
Radiant Reds	1 : 2	40ml COLORISSIMO® + 80ml Cream Developer 40 Volume (12%)	50 min.

Virgin Hair:

Step 1: Apply the formula 2cm from the root to the ends and leave for 20 minutes.

Step 2: Re-prepare the same formula and apply to the roots only, leaving for a further 20 minutes.

Coloured Hair - Re-touch:

Step 1: Prepare the desired formula, apply only to the re-growth area and leave for 20 minutes.

Step 2: Apply the same formula to the length and ends and leave for a further 10 minutes diluting, if required, with lukewarm water.

Superlightening - Virgin Hair:

Step 1: Apply the formula 2cm from the root to the ends and leave for 30 minutes.

Step 2: Re-prepare the same formula and apply to the roots only, leaving for a further 30 minutes.

Coloured Hair - Re-touch:

Step 1: Prepare the desired formula, apply only to the re-growth area and leave for 40-45 minutes.

Blonde Booster:

Point 1: Mix with any shade to lift the colour action up a shade.

For example: 35ml of 7.0 + 15ml of Blonde Booster + 75ml of Cream Developer 20 Volume = 8.0.

Point 2: Used on its own, with Cream Developer at 20, 30 or 40 Volume, Blonde Booster produces natural looking light nuances or soft highlights.

Rinsing:

At the end of the colouring process, add some tepid water and shampoo, lather to distribute the colour, rinse thoroughly.